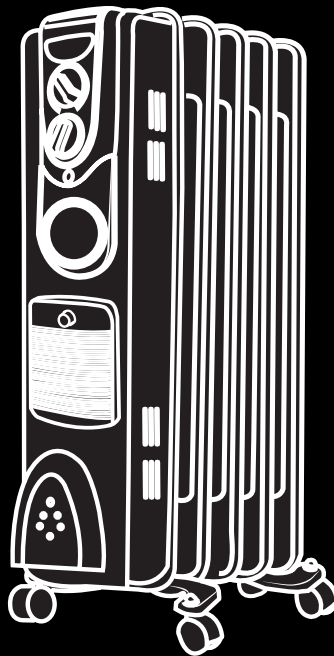


devola

Comfortable living everyday

Instruction Manual



Devola Master Oil Filled Radiator

1500W: DVSOR5F15B (Black) / DVSOR5F15W (White)
2000W: DVSOR7F20B (Black) / DVSOR7F20B (White)
2500W: DVSOR9F25B (Black) / DVSOR9F25W (White)



devola.co.uk

IMPORTANT SAFETY INSTRUCTIONS:

1. Read all instructions carefully before using.
2. Make sure the voltage is the same as that indicated on the rating plate of the appliance.
3. Do not operate this appliance if the cable or plug becomes damaged.
4. Keep the appliance and cable away from sources of heat, sharp objects or anything that may cause damage.
5. If the cord is damaged, it must be replaced by a qualified persons in order to avoid a hazard.
6. Ensure the appliance is switched off before connecting to the mains power supply.
7. Switch off the power supply and disconnect from mains supply when not in use, before cleaning or other maintenance.
8. To disconnect the appliance, switch it "OFF", and then remove the plug from outlet. Do not pull the cord to disconnect the plug.
9. The heater must not be located immediately below a socket-outlet.
10. Do not operate in areas where gasoline, paint or other flammable liquids are used or stored.
11. Indoor use only.
12. In order to avoid overheating, do not cover the heater.
13. To prevent a possible fire, do not block air intakes or exhaust in any manner.
14. Don't touch the hot surfaces.
15. Do not insert or allow foreign objects to enter any ventilation or exhaust opening, as this may cause an electric shock, fire or damage to the appliance.
16. Always ensure that hands are dry before operating or adjusting any switch on the product or touching the plug and socket-outlet.
17. This appliance is not intended for use by persons (including children) with reduced physical, sensory or mental capabilities, or lack of experience and knowledge, unless they have been given supervision or instruction concerning use of the appliance by a person responsible for their safety.
18. Children should be supervised to ensure that they do not play with the appliance.
19. Do not leave this appliance unattended when it's in use.

20. The most common cause of overheating is deposits of dust or fluff in the appliance. Ensure these deposits are removed regularly by disconnect the appliance and vacuum cleaning air vents and grilles.

21. Do not place the heater on carpet, don't place the cable under carpets. Arrange cord away from traffic areas so that it will not be tripped over.

22. Do not use this heater in the immediate surroundings of a bath, a shower or a swimming pool.

23. Do not store away until the heater cools down, store the heater in cool dry location when not in use.

24. This heater is filled with a precise quantity of special oil. Repairs requiring opening of the oil container are only to be made by the manufacturer or his service agent who should be contacted if there is an oil leak.

25. When scrapping the heater, follow the regulations concerning the disposal of oil.

26. This heater is hot when in use. To avoid burns, do not let bare skin touch hot surfaces. Let the heater cool down before moving. Keep combustible materials such as furniture, pillows, bedding, paper, clothes and curtains at least 1m away from the front, sides and rear of the heater.

Technical Specifications:

Model	DVSOR5F15	DVSOR7F20	DVSOR9F25
Rated Voltage	220-240 V~	220-240 V~	220-240 V~
Rated Frequency	50Hz	50Hz	50Hz
Rated Power	1500W	2000W	2500W
Protective Class	I	I	I

List of main parts (Fig. 1):

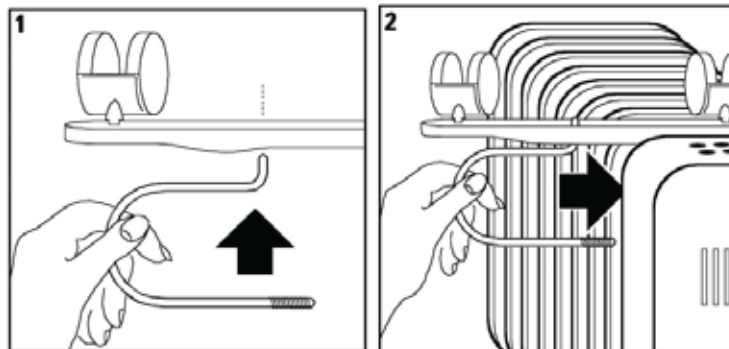


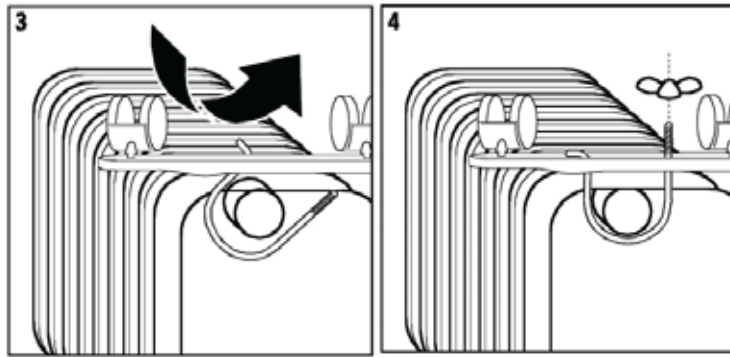
Fig. 1

1	Power setting switch
2	Thermostat control
3	Handle
4	Oil filled fins
5	Turbo fan
6	Turbo switch
7	Cord storage
8	Castors
9	Timer

Assembly:

1. Place one of the two u-bolts supplied into the castor bracket (fig. 1).
2. Position the castor bracket between the first and second columns and slide the u-bolt through the middle (fig. 2).
3. Turn the u-bolt so the threaded end is pointing vertically into the air (fig 3).
4. Ensure the castors are aligned horizontally and tighten the wing nuts. The wing nuts can be tightened securely without the use of a tool.





Operation:

- Connect the appliance to a safety socket.
- Turn the thermostat knob in the direction of clockwise until reaching the maximum temperature.
- Once the room temperature is reached, slowly turn the thermostat knob in the direction of anticlockwise until you hear a click and then the heater will stop working.
- If you want the heater to turn on and off automatically to maintain a specific room temperature, turn the thermostat knob to your desired temperature.
- Turn the switch to “0” position to switch off the heater. Unplug the appliance then after.

Turbo Heating

- This model is fitted with a heating fan which can work separately and can help to heat up the room more quickly. To turn this function on, press the turbo speed button.


Timer Operation – Daily Schedule


1. Look at the time on your clock or watch. If it is 10.00am, turn the numbered timer disk clockwise until the number 10 on the disk is in line with the arrow pointer on the middle of the timer wheel.
2. The teeth on the timer that you push inwards towards the center will indicate the times that the heater will be on.
3. Each tooth corresponds to a period of 15 minutes. This will leave visible sectors which correspond to the periods of operation.
4. When set, the radiator will automatically operate each day during the times programmed (important: the radiator must always be plugged into the socket).
5. To change the programming, move the teeth back outwards to the initial position and set the new periods of functioning.
6. If you want to make the appliance operate without programming, push all the teeth into the centre. In this case, to turn the mains to avoid continued

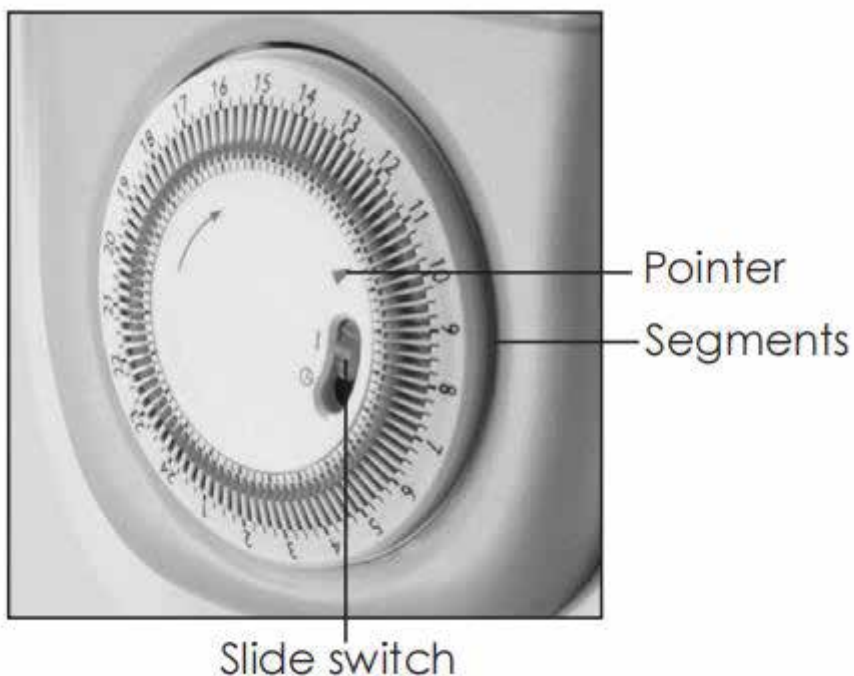
operation of the timer.

Timer Operation – 24 Hour Start Up Timer

With this function, you can set by number of hours, when you want the radiator to come on. For instance, if you want the heater to turn on after 2 hours.

- a) Change the Slide Switch to 
- b) Turn the appliance on and select the desired temperature level between 1-3 on the power setting switch (1).
- c) Rotate the timer knob clockwise until the pointer coincides with the number corresponding to the required hours. For instance, 8 if you would like the heater to turn on after 8 hours. The appliance will begin to warm up after the set time has expired.

NOTE: If you want the timer to run WITHOUT it turning the heater on, set the power setting switch to 0. Slide back to central () when you require to start timed operation.



Overheat safety device:

Your heater is fitted with a safety device to switch off the heater in the event of overheating. If the safety device operated, please turn the heater off, unplug the appliance and let it completely cool, inspect for blockage of air inlet or outlet, attempting to restart the heater then after.

If the heater fails to operate or the safety device switches the heater off again, return heater to your nearest service center for examination or repair.

Maintenance:

1. Always disconnect the appliance and let it completely cool before any maintenance.
2. Use a vacuum cleaner to remove dust on grilles.
3. Clean the outside of the unit with a damp cloth and then dry it with a dry cloth. Never immerse the unit in water, nor let water drip into the unit.

Storing:

1. Always disconnect the appliance, let it completely cool and clean it before storing.
2. If you do not use the device for a long period, put back the unit and the instruction manual to the original carton and store in a dry and ventilated place.
3. Do not place any heavy items on top of carton during storing as this may damage the appliance.



CORRECT DISPOSAL OF THIS PRODUCT

When the time comes to eliminate this product, please consider the environmental impact, and take it to recognised recycling facility instead of disposing it with general household waste. Take the equipment to a waste disposal site. Plastic and metal parts that are used in the construction of this appliance can be separated into pure grade which allow recycling. Ask to your service center for details. Every one of us can participate on the environmental protection.



Product Registration

Register your warranty online
within 30 days of purchase.

www.devola.co.uk/warranty



10% OFF

Use this discount code on your next order

DEV10



View Online

Black



White



devola.co.uk

Unit 1, Reedswood Park Road, Walsall, West Midlands. WS2 8DQ

Helpline 0800 043 8975 Email info@devola.co.uk